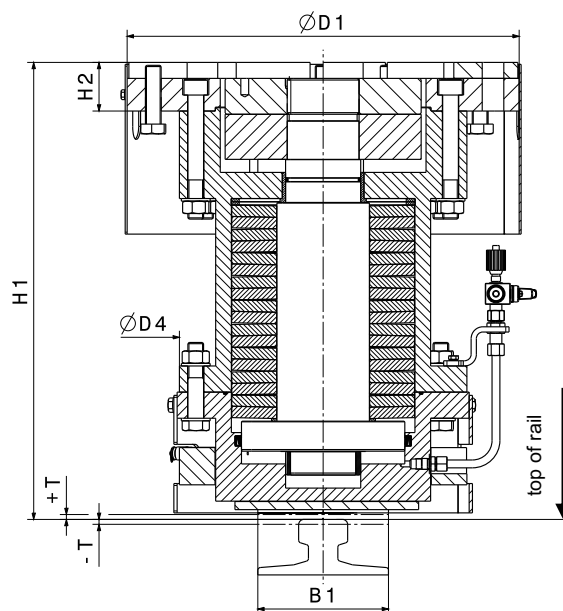
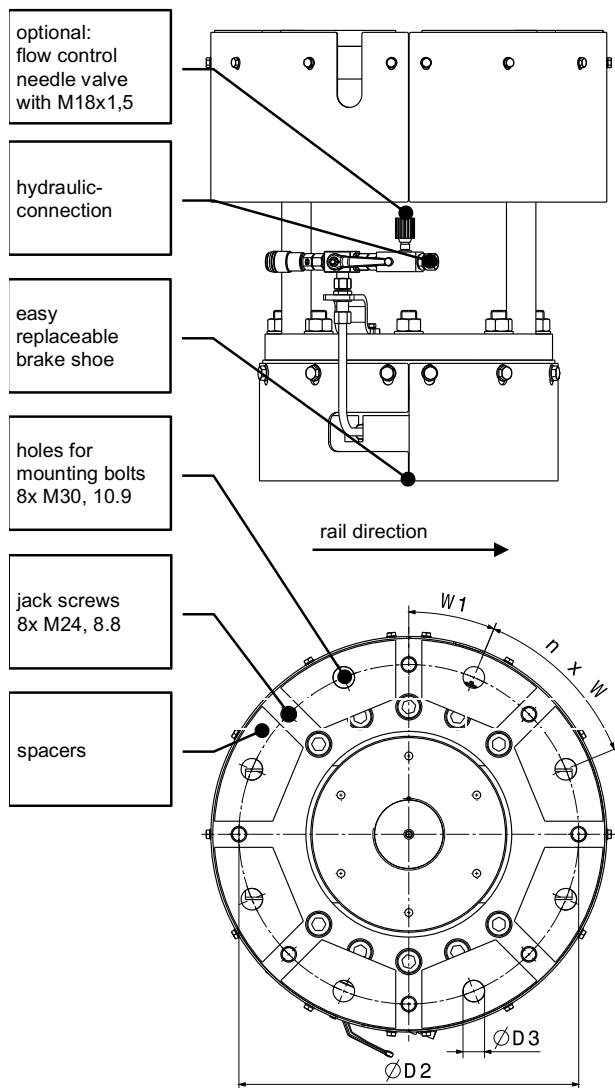




HYDRAULIC RAIL PUSHER

RPS 610

M 1501 448 E-EN-2017-10



HYDRAULIC DATA:

medium: HLP-Hydraulic oil DIN 51524-T2
HLP Synth 32 standard

temperature range: [-15°C.....+40°C]

we recommend: SIBRE-hydraulic power pack
V3.C *) for RPS 610
with electronic control box acc.
data sheet M 1501 264 E

*) max. 4 brakes per power pack
dimensional drawings upon request

Type	H1 mm	H2 mm	B1 mm	+T mm	-T mm	D1 mm	D2 mm	D3 mm	D4 mm	W1	n x W
RPS 610	700	74,5	200	+7,5	-7,5	600	520	33	457	22,5°	8 x 45°
Type	Holding force	Holding force at max. rail tolerance		Release pressure	max. operating pressure	Hydraulic- connection	Weight				
		+T	-T								
RPS 610	275 kN	346 kN	200 kN	165 bar	205 bar	1/2"	690 kg				