



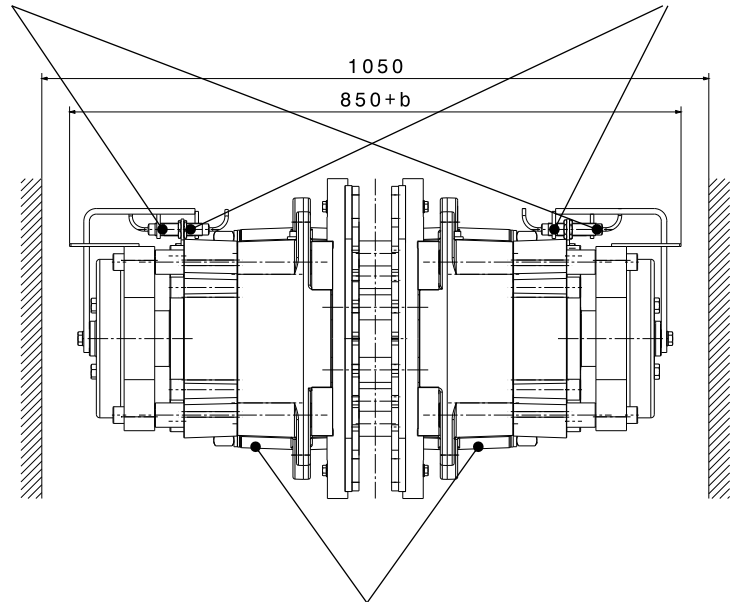
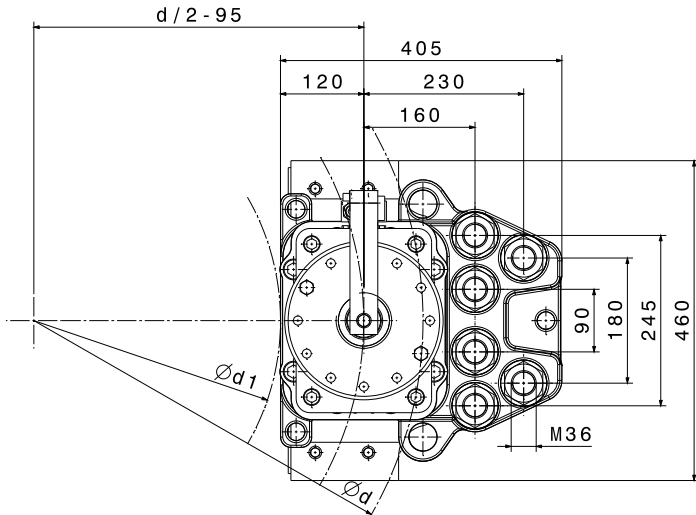
# CALIPER BRAKE

## SHI 231 & 232

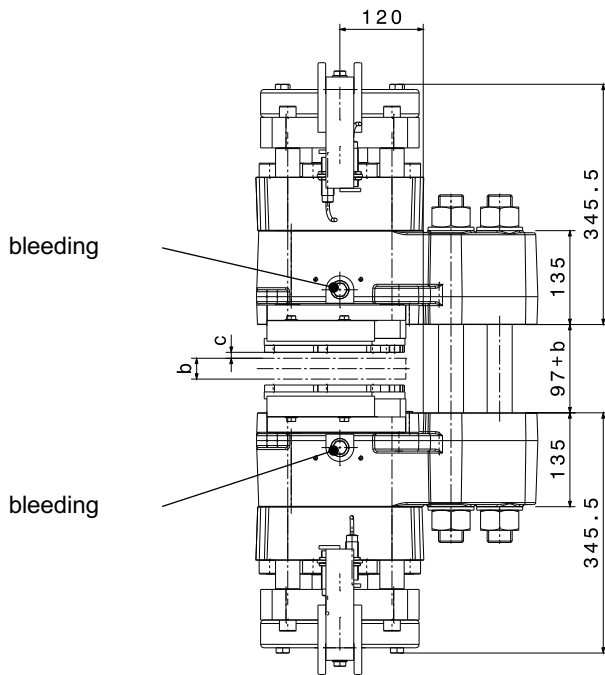
M 1501 371 E-EN-2017-01

optional: proximity switch "brake open / closed"

optional: proximity switch "lining wear"



hydraulic connection G 1/2"



manual release device is optionally available

| Mounting Studs |                       |                       |
|----------------|-----------------------|-----------------------|
| n              | quantity              | 6                     |
|                | size, grade           | M36, 12.9             |
| $M_A$          | fastening torque      | Nm 4000 at $\mu=0,14$ |
| Linings        |                       |                       |
|                | material              | sinter                |
|                | friction coefficient* | 0,4                   |

| SHI-Type                               |                                | 231     | 232                                       |
|--|--------------------------------|---------|---|
| <b>Clamping Force <math>F_A</math></b> |                                |         |   |
| $F_A$                                  | with airgap $c = 2 \text{ mm}$ | kN 240  | 300                                       |
| $F_A$                                  | with airgap $c = 3 \text{ mm}$ | kN 225  | 270                                       |
| <b>Torque Calculation</b>              |                                |         |   |
| $M_{Br}$                               | braking torque                 | Nm      | $2 \times F_A \times \mu \times (d/2-95)$ |
| <b>Hydraulic</b>                       |                                |         |   |
| PL                                     | release pressure               | bar 130 | 170                                       |
| $P_{max}$                              | max. pressure                  | bar 175 | 205                                       |
| $V_{max}$                              | volume at $c = 2,0 \text{ mm}$ | ltr     | 0,102                                     |
| <b>Brake Discs</b>                     |                                |         |   |
| b                                      | disc thickness                 | mm      | $\geq 20$                                 |
| d                                      | disc- $\emptyset$              | mm      | $\geq 1100$                               |
| d1                                     | max. hub or drum- $\emptyset$  | mm      | d-440 mm                                  |
| <b>Dimensions</b>                      |                                |         |   |
| L x B x H = 405 x (850+b) x 460 mm     |                                |         |   |
| weight: 415 kgs                        |                                |         |   |

\*average friction coefficient with standard material combination and a circumferential speed up to 15 m/s