

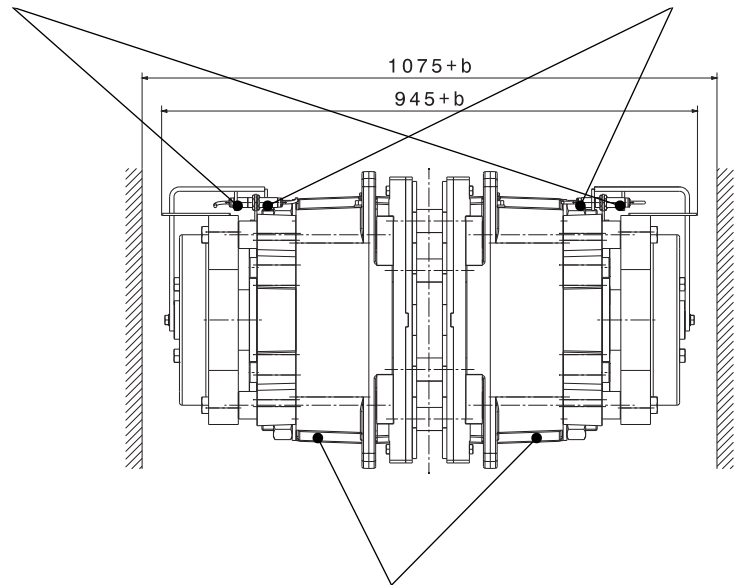
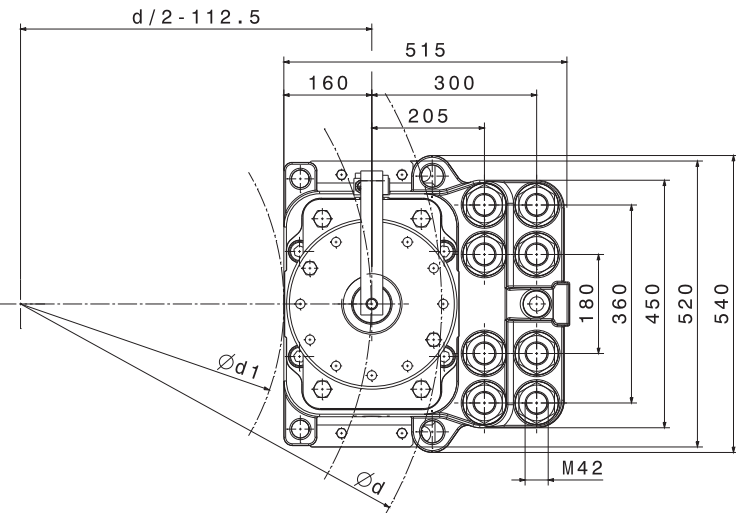
CALIPER BRAKE

SHI 281 & 282

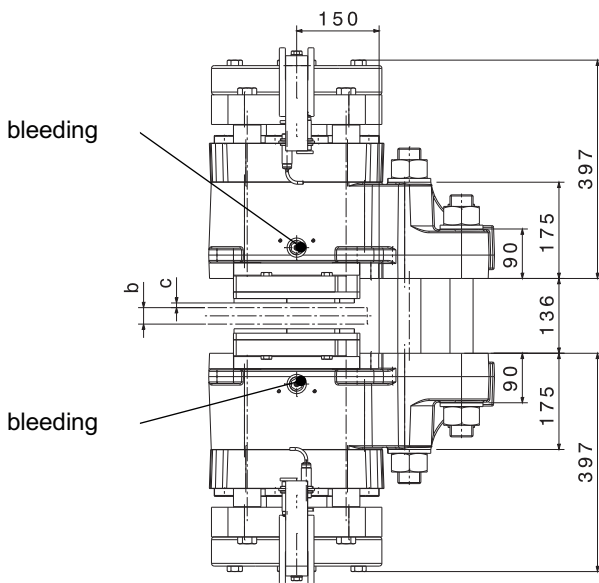
M 1501 427 E-EN-2017-01

optional: proximity switch "brake open / closed"

optional: proximity switch "lining wear"



hydraulic connection G 1/2"



manual release device is optionally available

Mounting Studs		
n	quantity	8
	size, grade	M42, 12.9
M_A	fastening torque	Nm 6200 at $\mu=0,14$
Linings		
	material	sinter
	friction coefficient*	0,4

SHI-Type		281	282
Clamping Force F_A			
F_A	with airgap $c = 1$ mm	kN 455	555
F_A	with airgap $c = 2$ mm	kN 425	510
F_A	with airgap $c = 3$ mm	kN 395	465
Torque Calculation			
M_{Br}	braking torque	Nm	$2 \times F_A \times \mu \times (d/2 - 112,5)$
Hydraulic			
PL	release pressure	bar	135 165
P_{max}	max. pressure	bar	175 205
V_{max}	volume at $c = 2,0$ mm	ltr	0,181
Brake Discs			
b	disc thickness	mm	≥ 30
d	disc- \emptyset	mm	≥ 1600
d1	max. hub or drum- \emptyset	mm	d-545mm
Dimensions			
L x W x H = 515 x (945+b) x 540 mm			
weight: 900 kgs			

*average friction coefficient with standard material combination and a circumferential speed up to 15 m/s