



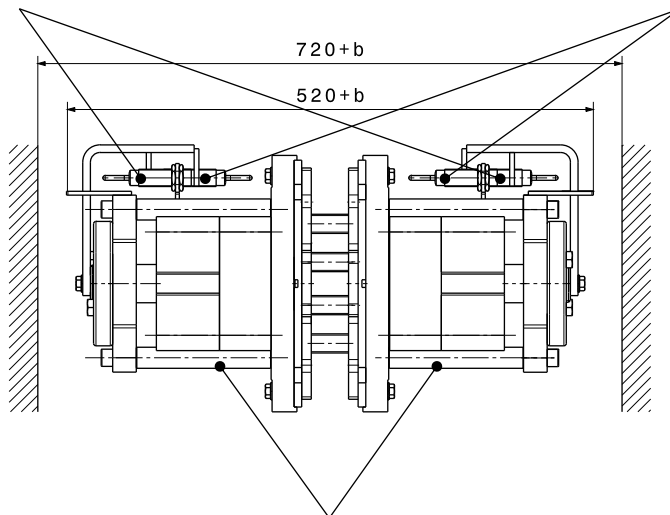
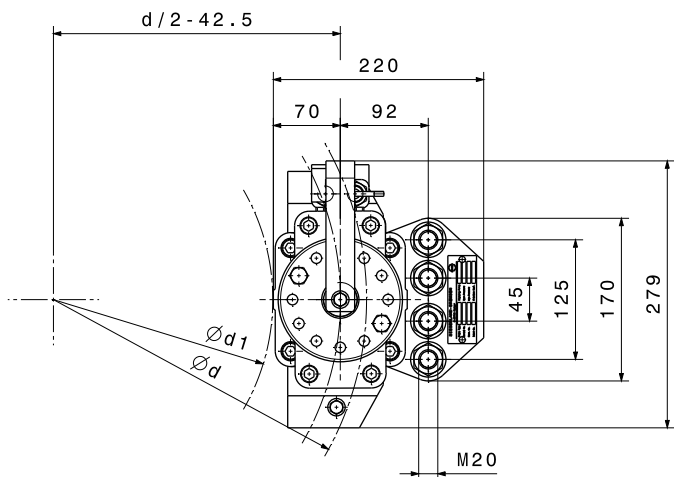
# CALIPER BRAKE

## SHI 75

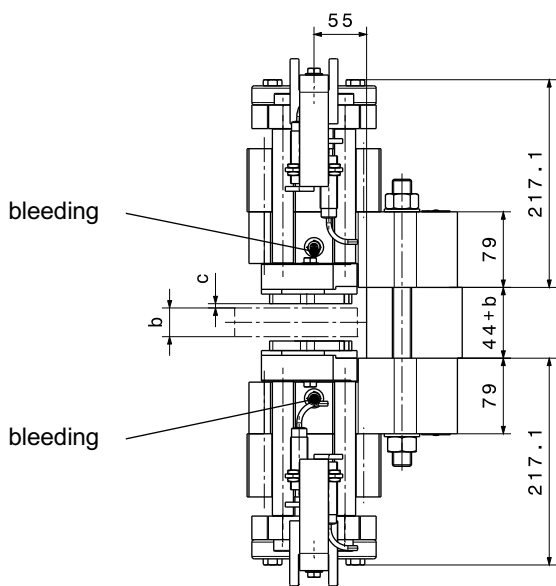
M 1501 306 E-EN-2017-01

optional: proximity switch "brake open / closed"

optional: proximity switch "lining wear"



hydraulic connection M14x1.5



manual release device is optionally available

SHI-Type 75-		1	2	3	4	5	6	
<b>Clamping Force <math>F_A</math></b>								
$F_A$	with airgap $c = 1$ mm	kN	18,3	22,4	25,4	30,6	44,5	49,8
$F_A$	with airgap $c = 2$ mm	kN	17,9	20,7	23,9	27,6	41,0	47,3
$F_A$	with airgap $c = 3$ mm	kN	17,6	19,0	22,4	24,6	37,0	44,4
<b>Torque Calculation</b>								
$M_{Br}$	braking torque	Nm	$2 \times F_A \times \mu \times (d/2-42,5)$					
<b>Hydraulic</b>								
PL	release pressure	bar	45	55	65	80	120	135
$P_{max}$	max. pressure	bar	85	85	110	110	150	175
$V_{max}$	volume at $c = 2,0$ mm	ltr	0,032					
<b>Brake Discs</b>								
b	disc thickness	mm	$\geq 20$					
d	disc- $\emptyset$	mm	$\geq 400$					
$d_1$	max. hub / drum- $\emptyset$	mm	d-230mm					
<b>Dimensions</b>								
L x W x H = 220 x (520+b) x 279 mm								
weight: 80 kgs								

Mounting Studs		
n	quantity	4
	size, grade	M20, 12.9
$M_A$	fastening torque	Nm 690 at $\mu=0,14$
Linings		
	material	sinter
	friction coefficient*	0,4

\*average friction coefficient with standard material combination and a circumferential speed up to 15 m/s