

HYDRAULIC POWER UNIT

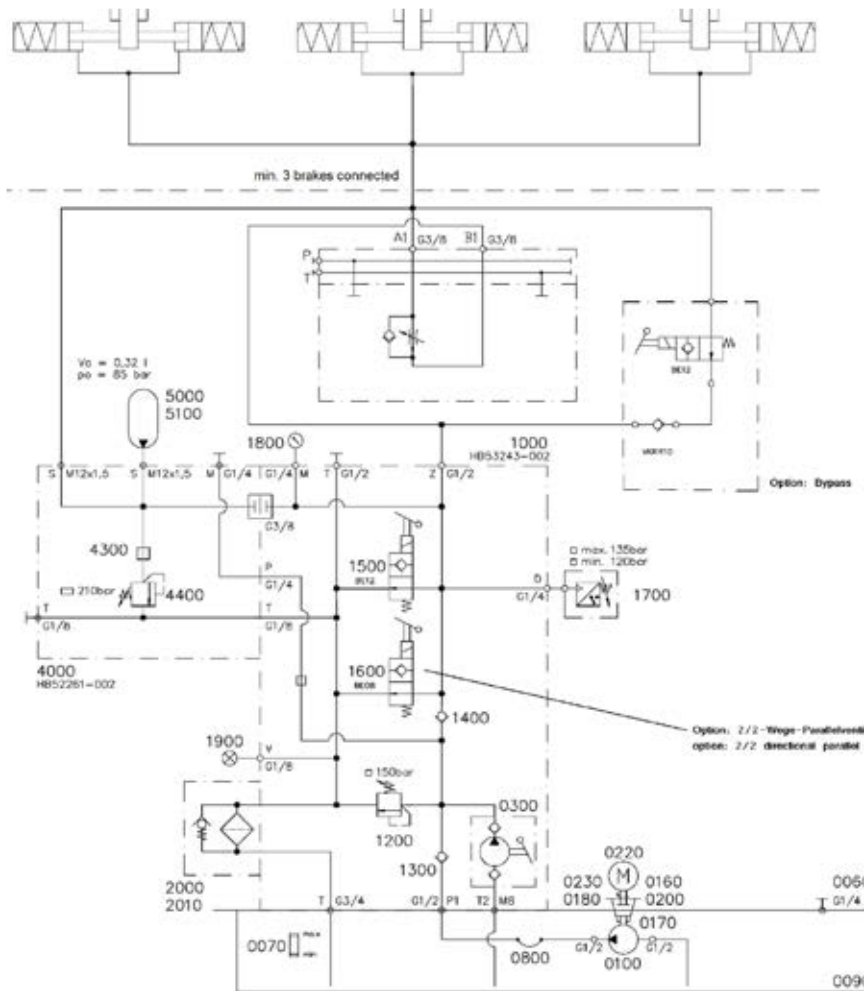
H-SF 3-SB

SIBRE



M 1501 324 E-EN 2016-02

TYPE	PRESSURE SWITCH		PRESSURE RELIEVE valve setting (DBV)	RELEASE PRESSURE	PUMP CAPACITY	MOTOR POWER
	min	max				
	bar		bar	bar	l/min	kW
V3-SB E	55	70	85	55	20	3.0
V3-SB A	80	95	110	80	20	3.0
V3-SB B	120	135	150	120	13	3.0
V3-SB D	145	160	175	145	9	3.0
V3-SB C	175	190	205	175	9	3.0



Hydraulic power packs V3-SB are equipped with additional components to provide an adjustable closing time of hydraulically released storm brakes. When closing the brakes the oil-volume, being increased by an additional accumulator, is pressed through an adjustable flow control valve. For immediate closing of storm brakes, the flow control valve can be bypassed by means of an optional 2/2 port valve with non-return valve. Accumulator, flow control valve and optional bypass are mounted on the power pack manifold. For further information please refer to our "Mode of Operation M 1501 261E".

TYPE	SUITABLE FOR					
V3-SB E	RHI 102	RHI 101				
V3-SB A	RHI 104	RHI 103				
V3-SB B	RHI 125	RHI 105	RHI 85	RHI 70	RHI 56	RHI 30
V3-SB C	RPS 600	RPS 450	RPS 300	RPS 200		